

SOLD



36 Bolton Street, Junee

This elevated crowd pleaser on the high side of Junee's sought-after Bolton St ,is positioned this traditional residence that will truly warm the heart.

Lovingly restored in areas, this beautiful residence will wow you as you walk up the front stairs to a stunning front verandah which stands proud with views of Junee.

Central hallway, stunning high press metal ceilings, timber boards are all the traditional elements that shine through. Ducted cooling and gas heating are featured for year-round comfort.

The bathroom has been renovated with quality at the forefront with careful consideration to selections....

...

4 1 4

Price: Undisclosed

View: <https://remaxvision.com.au/6835222>

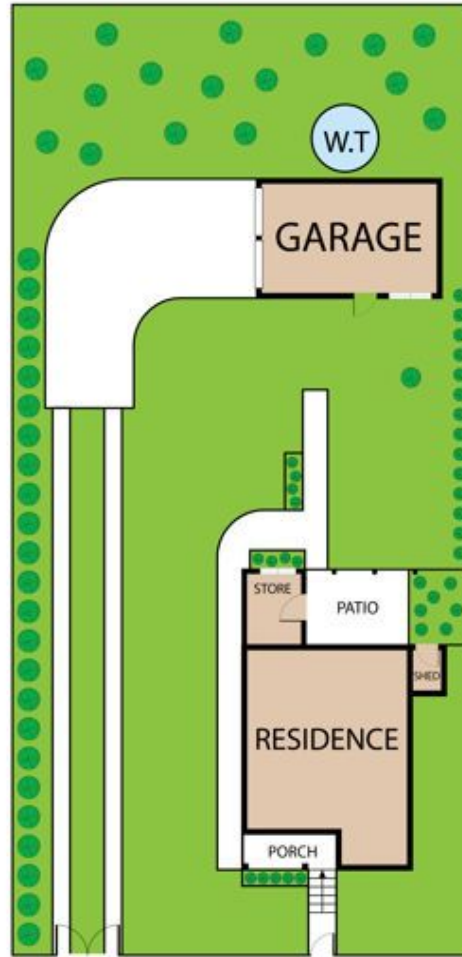
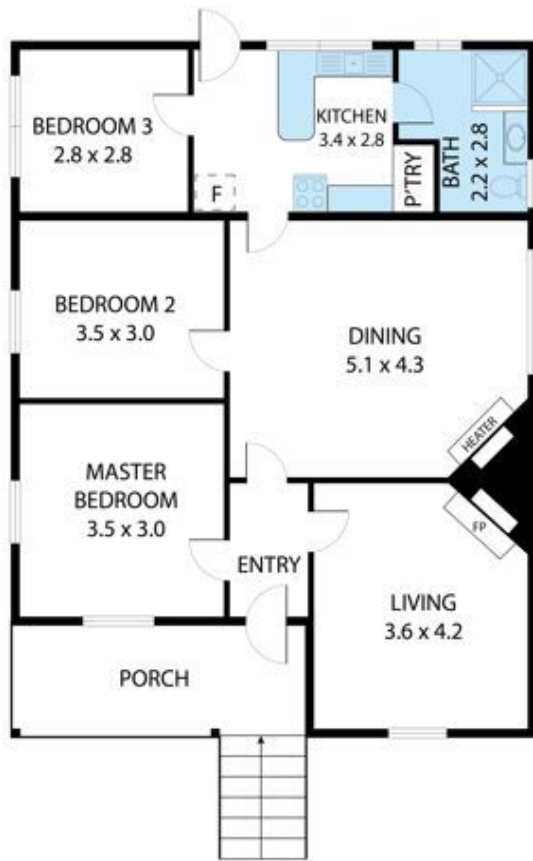
Jacqui Hedlund
M 0416 243 257



Jenna Pollard
0418 421 621



Narrabeen



36 Bolton Street, Junee 2663

Total Approx Floor Area 93 SQ.M

Whilst every attempt has been made to ensure the accuracy of the floor plan contained here, measurements of doors, windows, rooms and any other items are approximate and no responsibility is taken for any error, omission, or misstatement. This plan is for illustrative purposes only and should be used as such by any prospective purchaser.