

SOLD



22 William Street, Junee

A sparkling pool, drive through access to a generous yard plus shedding and additional storage places this 885m2 package on your list to buy!

The attractive cottage facade will certainly draw you in and the features will excite; this one won't last...

Impressive living zones will excite a family with a massive open plan lounge and dining room plus a separate formal living zone with inbuilt cabinetry featured along one wall. Timber kitchen is the ultimate family pleaser which is designed to overlook the sparkling pool whilst also enjoying a breakfast bench. Overhead storage, ideal preparation space and a great design will make cooking for a family a breeze!...

...

4 1 1

Price: Undisclosed

View: <https://remaxvision.com.au/6859872>

Jacqui Hedlund

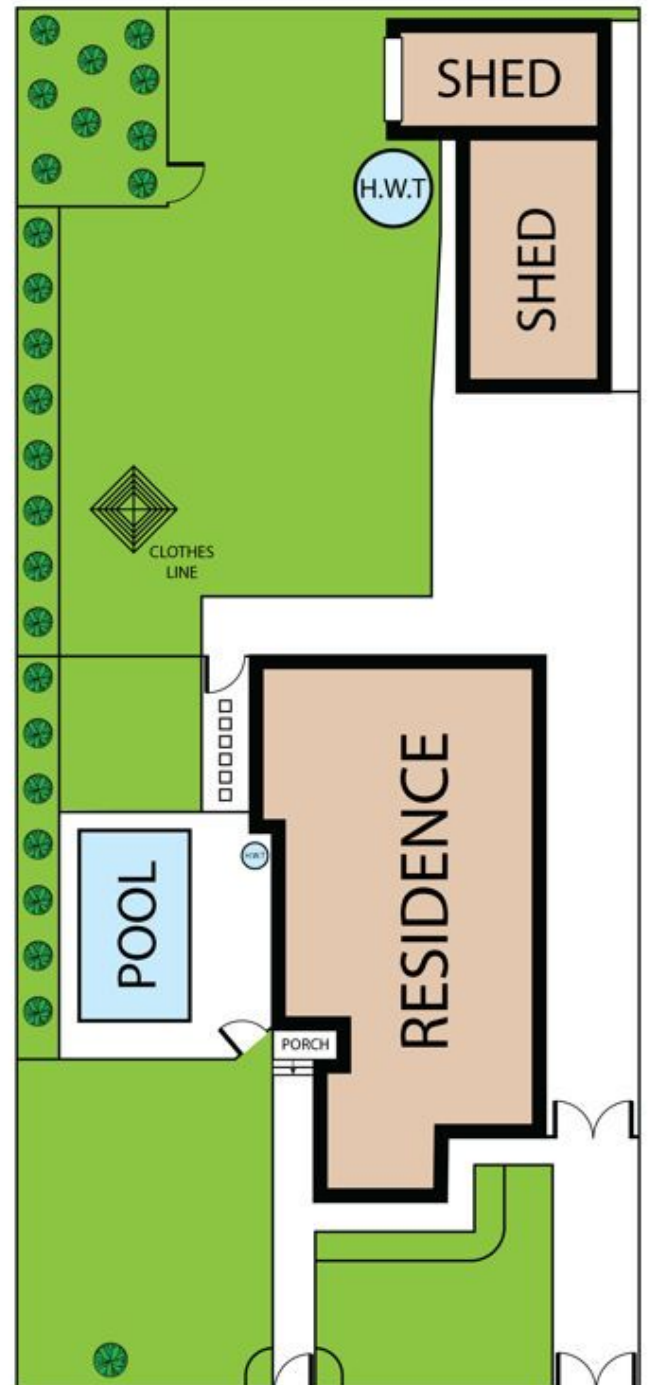
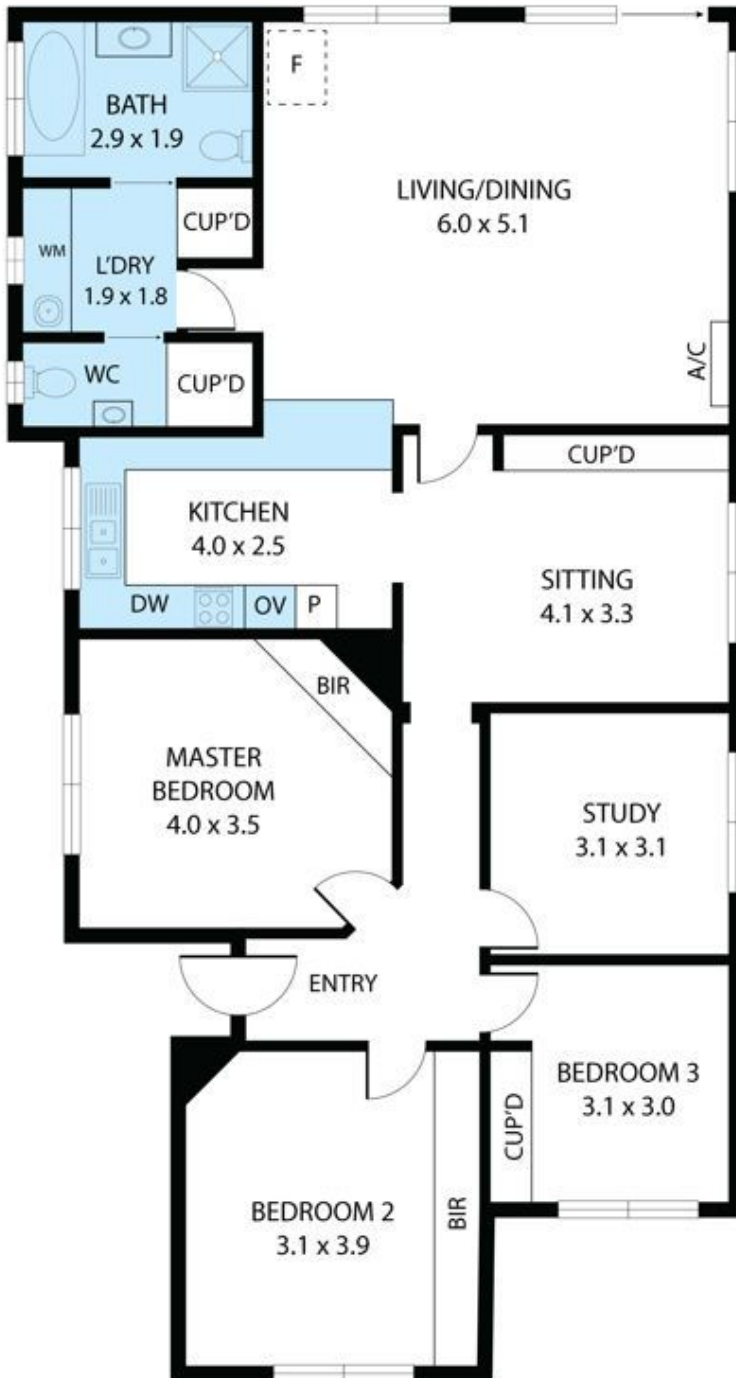
M 0416 243 257



Jenna Pollard
0418 421 621



Narrabeen



22 William Street, Junee 2663

TOTAL APPROX. FLOOR AREA 123 SQ.M

Whilst every attempt has been made to ensure the accuracy of the floor plan contained here, measurements of doors, windows, rooms and any other items are approximate and no responsibility is taken for any error, omission, or misstatement. This plan is for illustrative purposes only and should be used as such by any prospective purchaser.