

SOLD



93 Wardle Street, Junee

Welcome to "The Great Australian Dream" positioned on an attractive 8,586m2 block with a family haven that is a truly remarkable package.

This unique package provides the ultimate combination of lifestyle and family fun in one.

This clever floorplan features expansive living zones of generous proportions forming a massive 364m2 residence. Including a formal lounge room, an open plan kitchen, meals and family zone, flowing through to a separate rumpus room; living is easy!

Enjoy a quality light filled kitchen which is enhanced by an abundance of storage, gas cooktop, electric oven, dishwasher and an amazing walk in pantry....

Tinte...

4 3 10

Price: Undisclosed

View: <https://remaxvision.com.au/7164684>

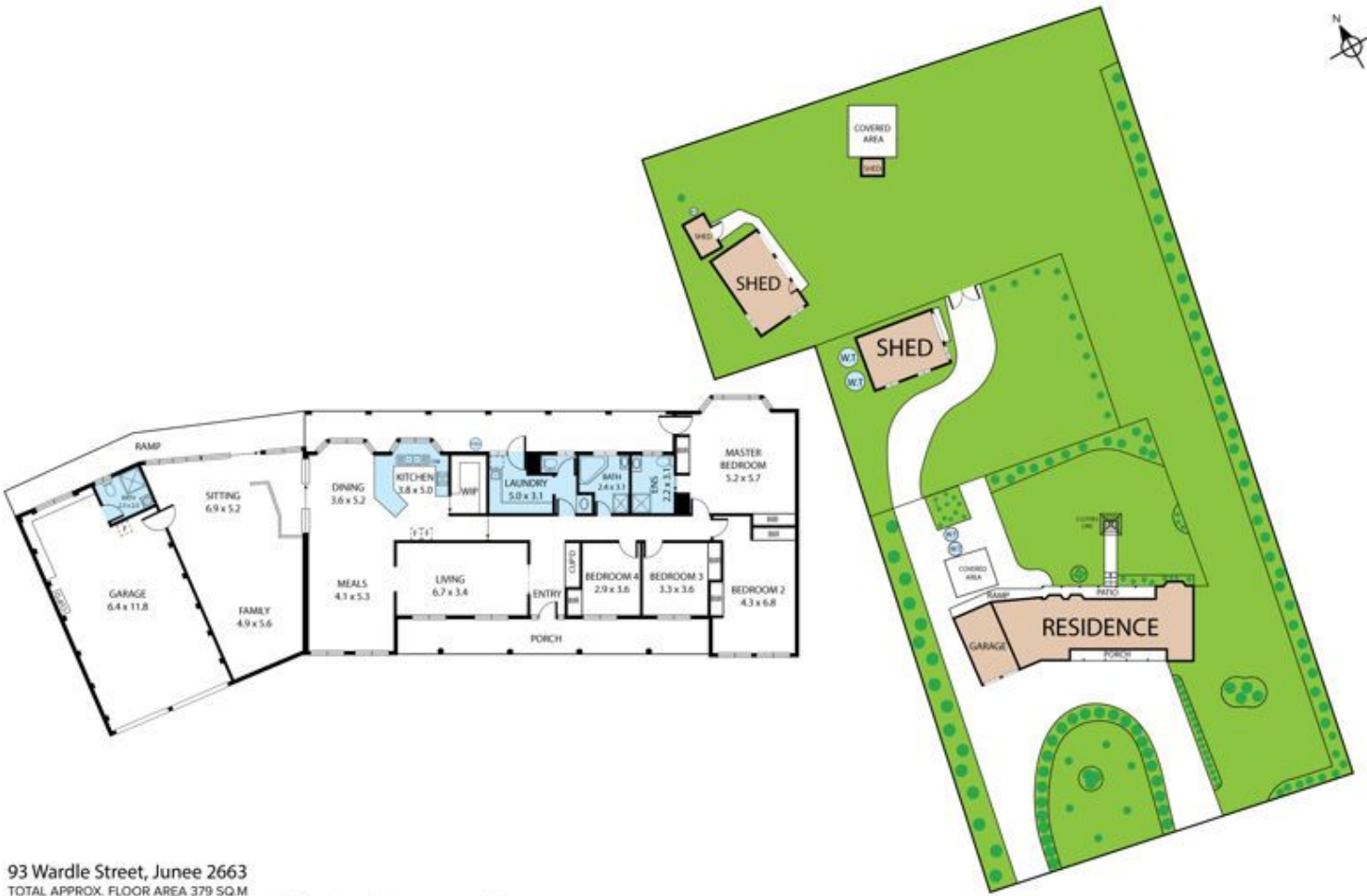
Emma Heard
M 0431 921 625



Jenna Pollard
0418 421 621



Narrabeen



93 Wardle Street, Junee 2663

TOTAL APPROX. FLOOR AREA 379 SQ.M

Whilst every attempt has been made to ensure the accuracy of the floor plan contained here, measurements of doors, windows, rooms and any other items are approximate and no responsibility is taken for any error, omission, or misstatement. This plan is for illustrative purposes only and should be used as such by any prospective purchaser.