

SOLD



22 Boundary Street, Junee

Discover the boundless potential of this delightful property at 22 Boundary Street, Junee, NSW 2663. Perfect for developers, families, and those looking for an abundance of space, this charming 3-bedroom, 1-bathroom cottage is nestled on a generous 5-acre parcel of land with striking views of the Junee landscape.

Upon entering the home, you'll be captivated by its timeless character, featuring a central hallway, spacious sun-drenched lounge room, and three well-sized bedrooms. The newly renovated bathroom is a welcome modern touch, whilst the original kitchen and meals area exude a warm, inviting ambience.

...

3 🏠 1 🏠 2 🏠

Price: Undisclosed

View: <https://remaxvision.com.au/7681086>

Jenna Pollard

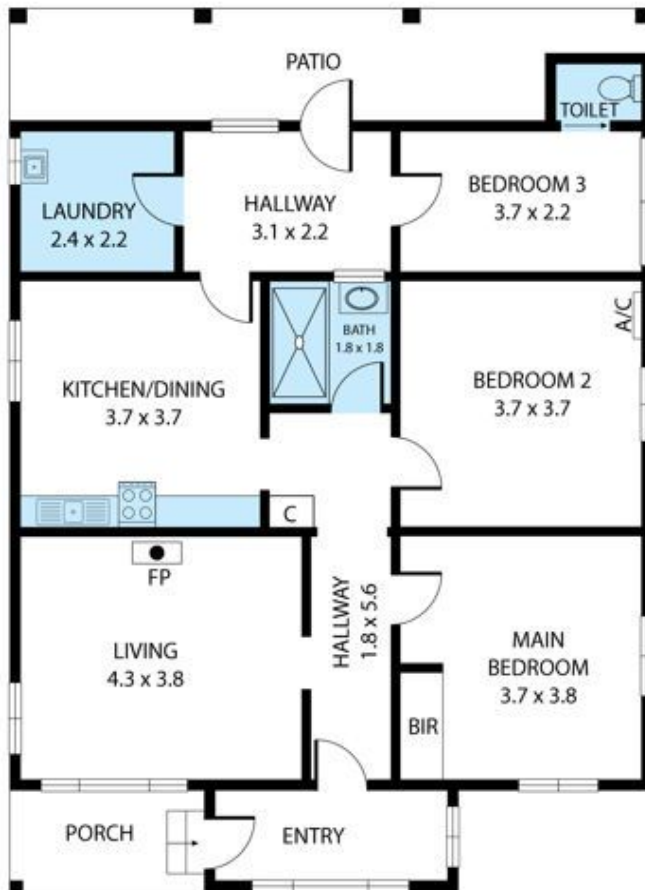
M 0418 421 621



Jacqui Hedlund
0416 243 257



Narrabeen



22 Boundary Street, Junee 2663

TOTAL APPROX. FLOOR AREA 95 SQM

Whilst every attempt has been made to ensure the accuracy of the floor plan contained here, measurements of doors, windows, rooms and any other items are approximate and no responsibility is taken for any error, omission, or misstatement. This plan is for illustrative purposes only and should be used as such by any prospective purchaser.