

SOLD



67 George Street, Junee

Introducing a fantastic opportunity for a savvy renovator or builder at 67 George Street, Junee, NSW, 2663. Set on a substantial 1305m2 residential block backing onto vacant land, this elevated property boasts a picturesque rural aspect and presents enormous potential for those with a keen eye for detail.

The property requires work, but with the right attention, it will undoubtedly yield significant rewards for the right buyer. Comprising of three generous-sized bedrooms, including a blank canvas bedroom with new gyprock, and a main bedroom featuring an ensuite and walk-in robe, there is ample space for a family to grow.

...

3

1

Price: Undisclosed

View: <https://remaxvision.com.au/7706316>

Jacqui Hedlund

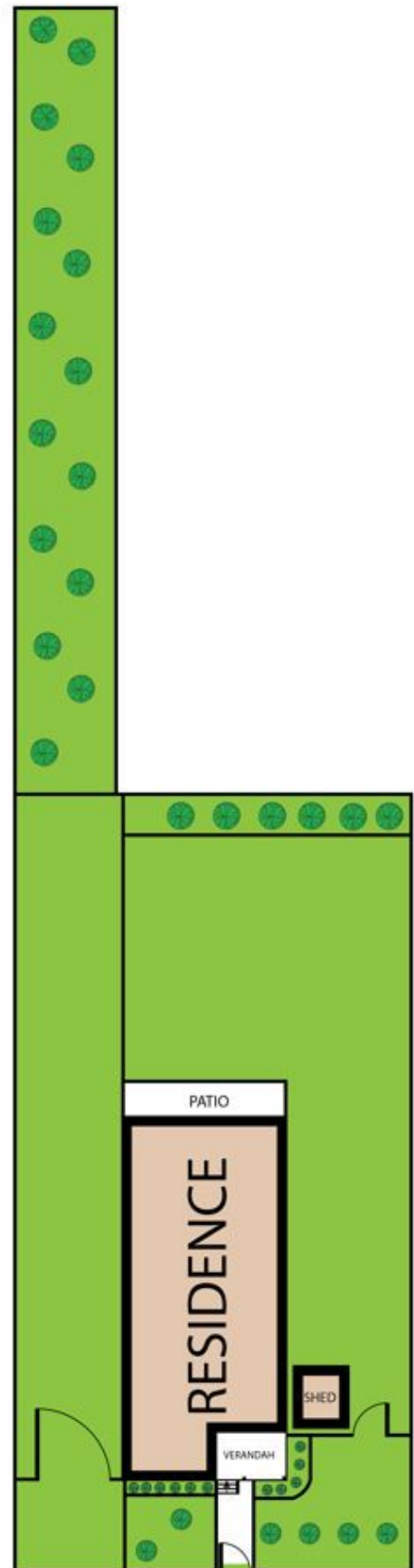
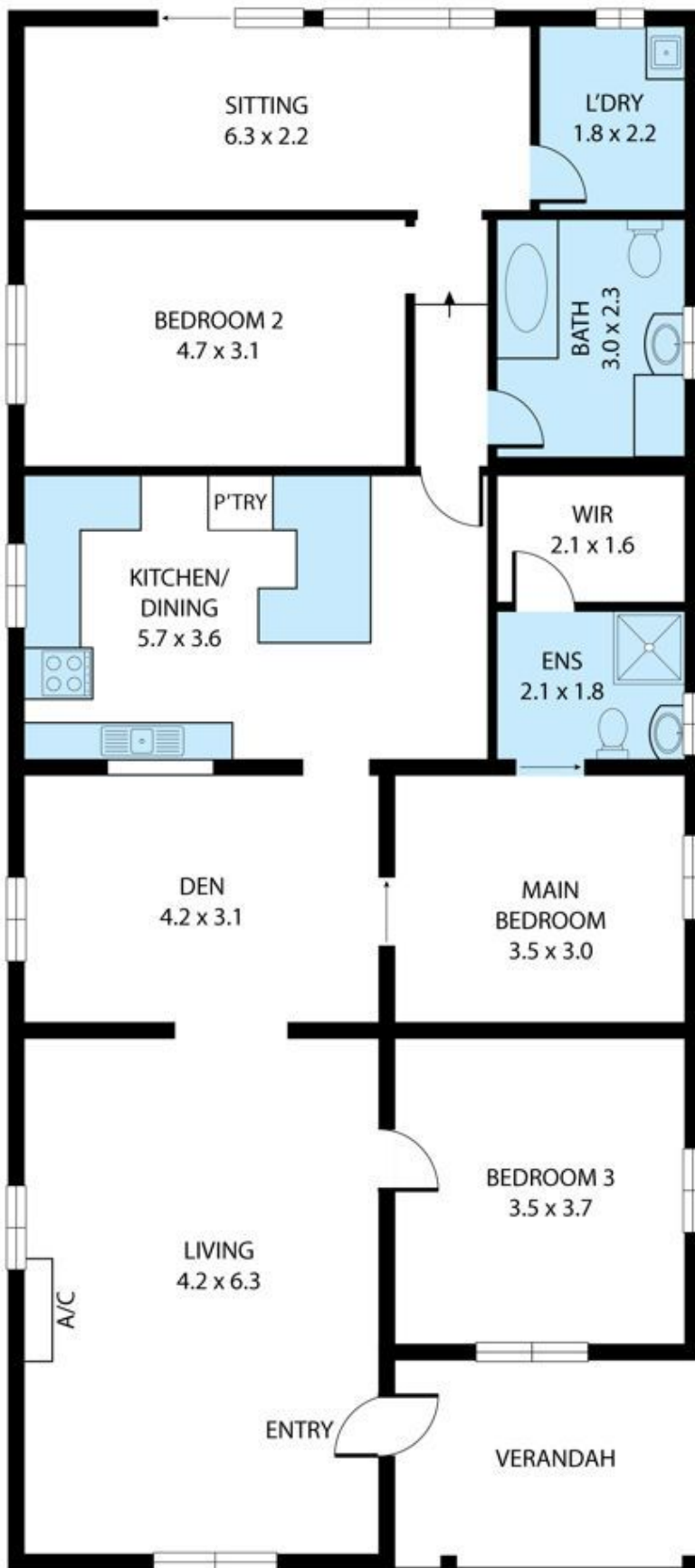
M 0416 243 257



Jenna Pollard
0418 421 621



Narrabeen



67 George Street, Junee 2663
TOTAL APPROX. FLOOR AREA 138 SQ.M

Whilst every attempt has been made to ensure the accuracy of the floor plan contained here, measurements of doors, windows, rooms and any other items are approximate and no responsibility is taken for any error, omission, or misstatement. This plan is for illustrative purposes only and should be used as such by any prospective purchaser.