

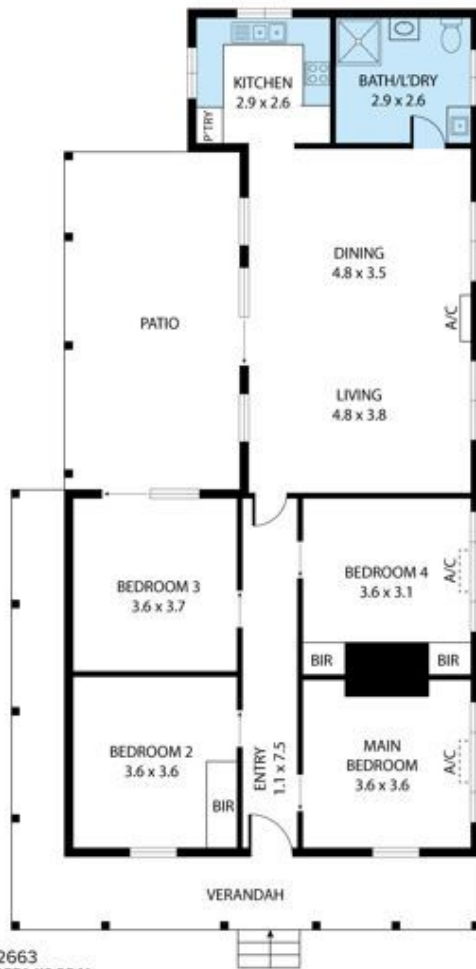
FOR SALE**9 Earl Street, Junee**

Introducing a fantastic investment opportunity or a perfect family home at 9 Earl Street, Junee, NSW, 2663. This rare four-bedroom house offers a unique combination of space, style and an unbeatable location. Situated on a generous 947 square metre corner block, the property boasts elevated views and access from both Earl Street and Prince Street. Currently leased until 15th April 2024, with a weekly rent of \$370, this property presents an attractive option for investors looking for a steady income stream. Additionally, families seeking a spacious home with modern features will also find this property highly appealing.

The newly installed split system ensures year-round comfort with both heating and cooling ...

4 **1** **2**
Price: \$399,000**View:** <https://remaxvision.com.au/7798927>**Jacqui Hedlund****M 0416 243 257****Jenna Pollard****0418 421 621**

Narrabeen



9 Earl Street, Junee 2663

TOTAL APPROX. FLOOR AREA 116 SQ M

Whilst every attempt has been made to ensure the accuracy of the floor plan contained here, measurements of doors, windows, rooms and any other items are approximate and no responsibility is taken for any error, omission, or misstatement. This plan is for illustrative purposes only and should be used as such by any prospective purchaser.