

FOR SALE



58 Harold Street, Junee

Introducing the perfect equestrian haven nestled in picturesque Junee, NSW. Welcome to 58 Harold Street, a stunning, modern acreage/semi-rural property situated on 3.4 acres, providing an idyllic rural lifestyle for horse lovers and families alike.

Built in approximately 2020, this contemporary four-bedroom, two-bathroom home is beautifully appointed with modern conveniences, whilst maintaining a classic country charm. As you enter through the wide hallway, you are greeted with generously-sized bedrooms complete with built-in robes, and a luxurious master suite boasting a walk-in robe and en-suite. Entertaining is a breeze with the formal lounge, open plan living, dining and kitchen area...

4 2 2

Price: POA

View: <https://remaxvision.com.au/7812788>

Jenna Pollard

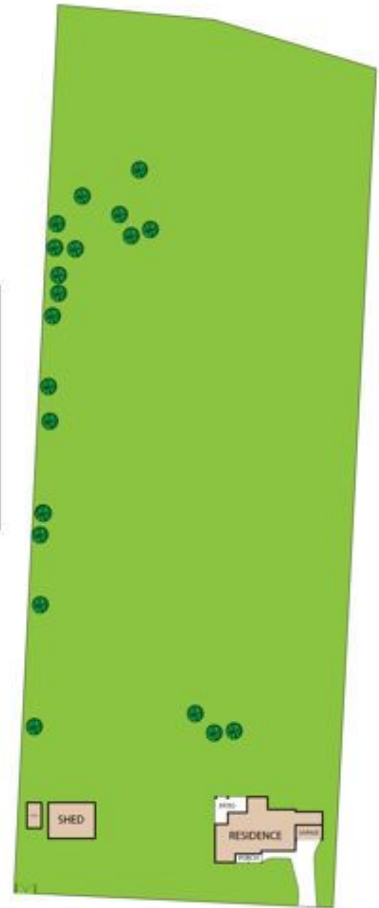
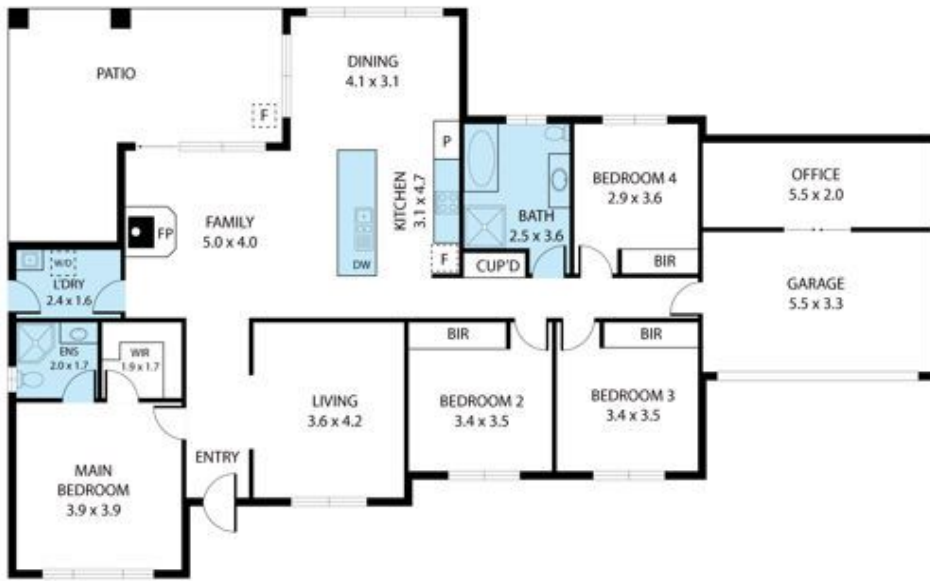
M 0418 421 621



Jacqui Hedlund
0416 243 257



Narrabeen



58 Harold Street, Junee 2663

TOTAL APPROX. FLOOR AREA 173 SQ.M

Whilst every attempt has been made to ensure the accuracy of the floor plan contained here, measurements of doors, windows, rooms and any other items are approximate and no responsibility is taken for any error, omission, or misstatement. This plan is for illustrative purposes only and should be used as such by any prospective purchaser.