

LEASED



1/84 John Potts Drive, Junee

This immaculate unit, having just been built, offers a modern living experience perfect for those in search of a delightful rental property.

Step inside and discover a splendid three-bedroom home where the master suite boasts a walk-in robe and a sleek ensuite for your convenience. The additional bedrooms featuring built-in robes offer ample space for relaxation or a home office setup, depending on your needs.

The heart of this home is the open-plan kitchen, living, and dining area, designed for comfort and ease. The modern kitchen doesn't shy away from impressing with a smeg dishwasher, 4 burner cooktop, stove, and a butler's pantry....

...

3 (bath icon) 2 (bed icon) 2 (car icon)

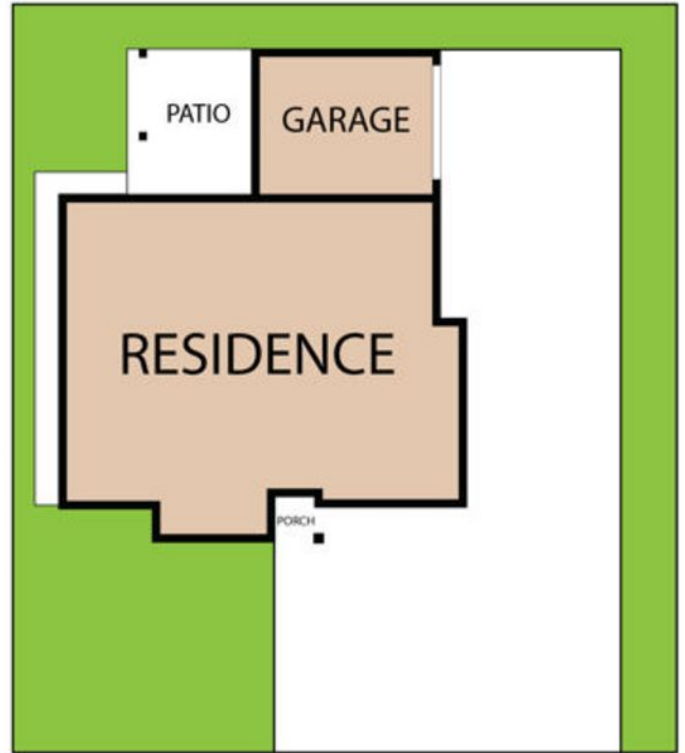
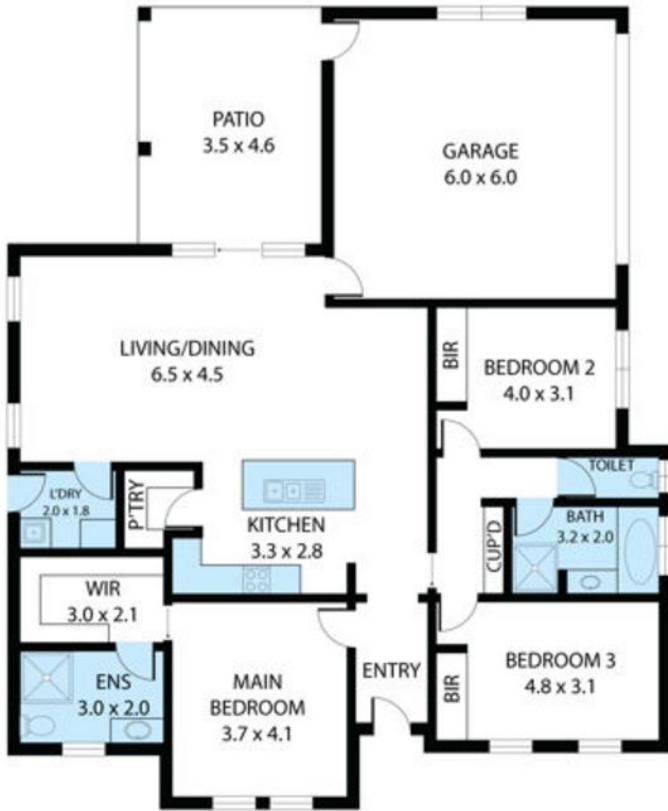
Price: \$450 Weekly

View: <https://remaxvision.com.au/8075895>

Aimee Hanson  
M 0418583510



RE/MAX Property Specialits,  
Narrabeen



1/84 John Potts Drive, Junee 2663

TOTAL APPROX. FLOOR AREA 170 SQ.M

Whilst every attempt has been made to ensure the accuracy of the floor plan contained here, measurements of doors, windows, rooms and any other items are approximate and no responsibility is taken for any error, omission, or misstatement. This plan is for illustrative purposes only and should be used as such by any prospective purchaser.