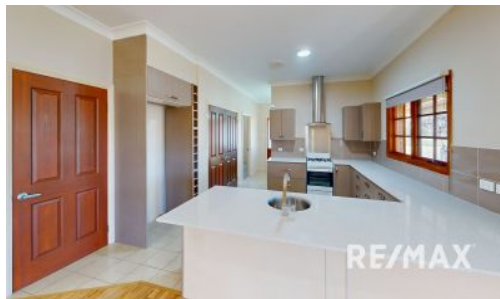
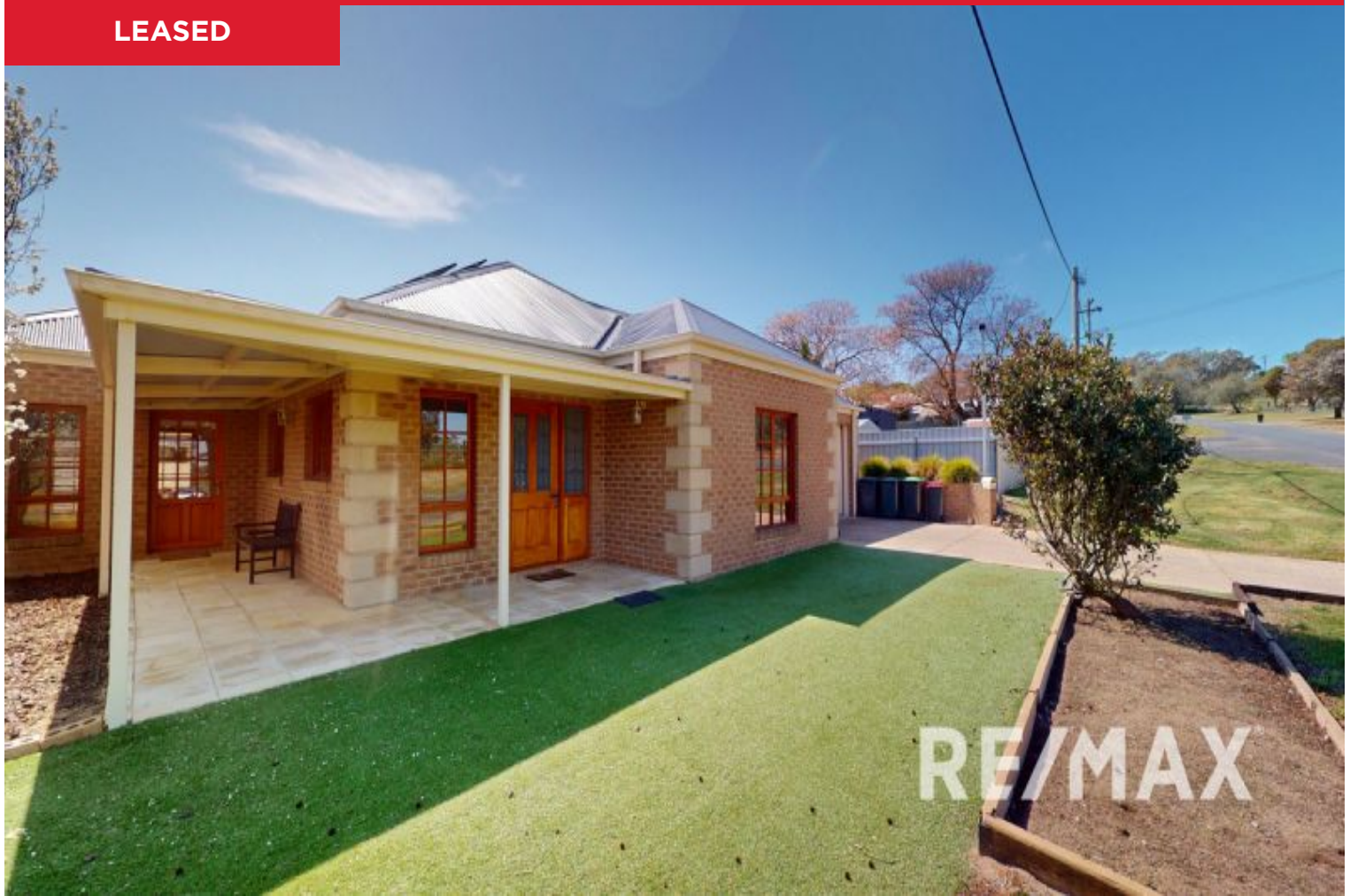


LEASED



18 Church Street, Junee

This modern four-bedroom home boasts an open-plan kitchen, living, and dining area, designed for seamless entertaining and daily living.

Four generous bedrooms including a master with ensuite and walk-in robe, a well-appointed bathroom featuring a separate bath and shower, alongside an additional separate toilet, this residence ensures privacy and ease for all family members. Additional comforts include gas heating for those cooler months and split systems to maintain the perfect indoor climate year-round. With two parking spaces, your vehicles are well accommodated.

Enjoy the low-maintenance yard, providing a tranquil outdoor retreat without the burden of...

4 2 2

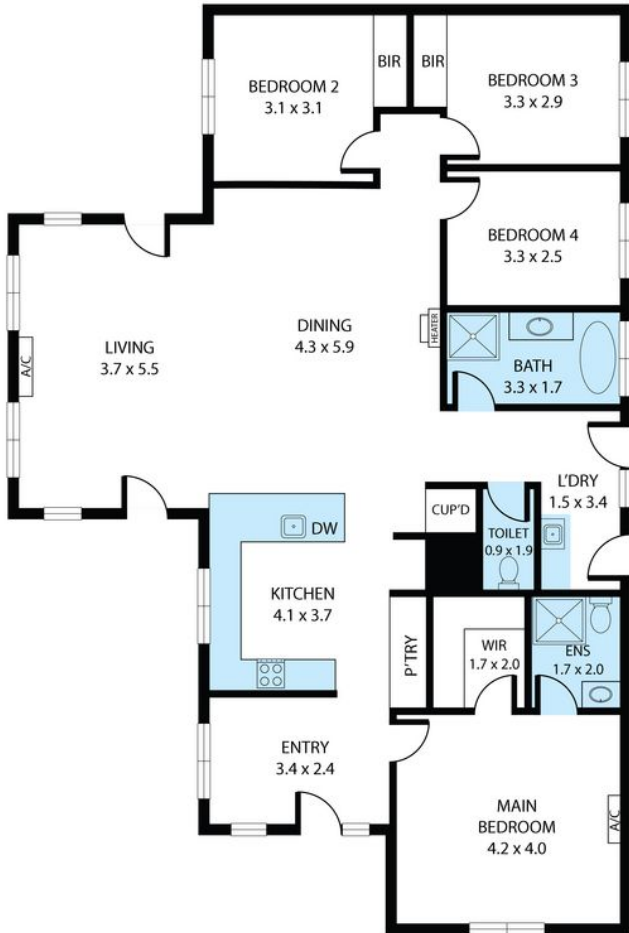
Price: \$480 per week

View: <https://remaxvision.com.au/8134594>

Aimee Hanson
M 0418583510



RE/MAX Property Specialists,
Narrabeen



18 Church Street, Junee 2663
TOTAL APPROX. FLOOR AREA 153 SQ.M

Whilst every attempt has been made to ensure the accuracy of the floor plan contained here, measurements of doors, windows, rooms and any other items are approximate and no responsibility is taken for any error, omission, or misstatement. This plan is for illustrative purposes only and should be used as such by any prospective purchaser.