

FOR SALE



RE/MAX



RE/MAX



RE/MAX



RE/MAX

**2/37 Waratah Street, Junee**

Privately positioned in Waratah Drive, this immaculate 2022-built townhouse presents an opportunity for downsizers and retirees seeking a blend of comfort and convenience. The residence is part of a tasteful collection of nine townhouses, located a mere stone's throw from the town centre and local high school, ensuring all necessities are within easy reach. Embracing a chic mixed facade, the home's interior exudes freshness with cool, crisp colours and shutters throughout, creating an inviting atmosphere. The two generously proportioned bedrooms each feature built-in robes, offering ample storage space. The convenience of a double garage, complete with internal access, cannot be overstated, providing security and ease for up to two vehicles.... The heart of the home is the light-filled open plan kitchen, living, and dining area that exudes a sense of airiness and sophistication. The space harmoniously blends functionality with style, ensuring every moment at home is a delight. The kitchen boasts luxurious stone benchtops, high-end Smeg appliances, and soft close drawers, perfect for the culinary enthusiast. The elegantly appointed bathroom is adorned with floor-to-ceiling tiles and features a separate shower and bath, w...

2 🚗 1 🏠 2 🚗

**Price:** \$509,000

**View:** <https://remaxvision.com.au/8251736>

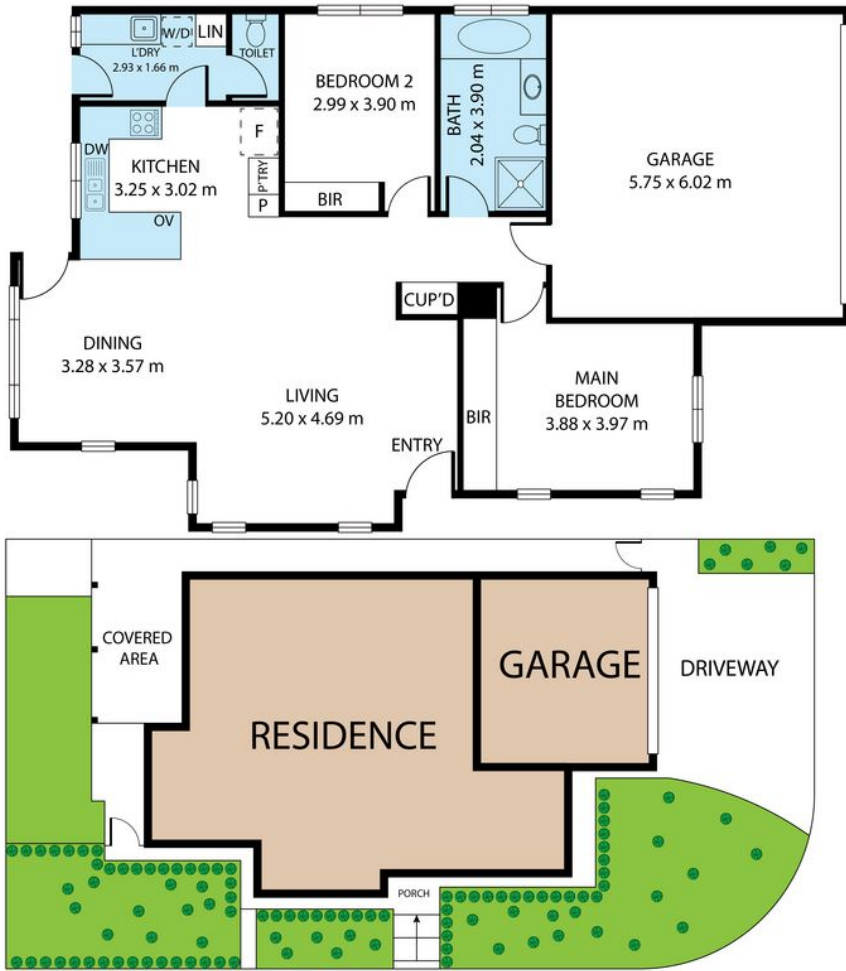
**Jacqui Hedlund**  
**M 0416243257**



**Jenna Raulston**  
**0418 421 621**



Narrabeen



2/37 Waratah Drive, Junee, NSW, 2663  
 TOTAL APPROX. FLOOR AREA 131 SQ.M

Whilst every attempt has been made to ensure the accuracy of the floor plan contained here, measurements of doors, windows, rooms and any other items are approximate and no responsibility is taken for any error, omission, or misstatement. This plan is for illustrative purposes only and should be used as such by any prospective purchaser.