

## Lease Listings



JUNEE

### Commercial Office Space

- Positioned in heart of JUNEE! - Comprising of open plan entry -  
Separate office, storage and desk space - Well maintained  
amenities - Good carpet and..

**Aimee Hanson 02 69244000**

1  \$600 Weekly  
1   
1 



JUNEE

### Junee Self Storage

Brand New Build Storage Units...34 storage units varying in sizes  
and ready for you.Positioned in a convenient location of Junee,  
this development will..

**Jenna Pollard 02 6924 4000**

1  FOR LEASE  
1   
0 






JUNEE

### LIGHT AND AIRY UNIT

This light and airy unit is perfect for anyone who wants their own  
space and something that is low maintenance.You will find a  
combined kitchen, meals..

**Aimee Hanson 02 69244000**

1  \$240 Per Week  
1   
1  Inspect  
Tue 4:30-4:40pm






JUNEE

### MODERN AND FABULOUS

Providing lovely appeal from the first moment, you enter through a  
white picket fence to a modern gem with easy to maintain front  
and rear yards ideal..

**Aimee Hanson 02 69244000**

3  \$350 Per Week  
1   
1 



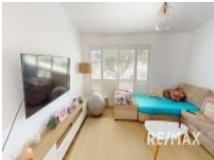
JUNEE

### REFURBISHED AND READY

Cute as a button and around the corner from The Junee Licorice &  
Chocolate factory this 2 bedroom home will lease fast.Internally  
refurbished, you will..

**Aimee Hanson 02 69244000**

2  \$350 Weekly  
1   
1 




COOLAMON

### Charming Coolamon home with granny flat

Discover a delightful abode perfect for renters desiring a blend of  
charm and convenience. This captivating home presents a  
harmonious open-plan layout,..

**Aimee Hanson 02 69244000**

5  \$460 Per Week  
1   
4  Inspect  
Fri 11:30-11:55am